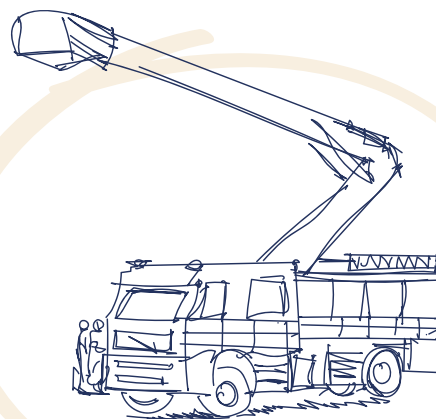
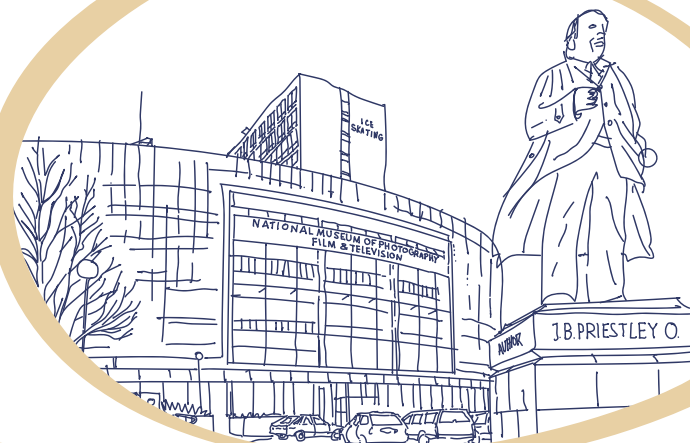




West Yorkshire
Fire & Rescue Service

Bradford District Plan 2021-22





Contents

Foreword	3
About Bradford district	4
Risk and fire & rescue resource in Bradford district	5
Why we are here	6
Priorities 2020-2023	7
How we will deliver these priorities	8
Risks in the Bradford District	10
Managing risks in Bradford	11
Performance	17
Bradford, our people	18
Monitoring progress	19
Contact us	20

Foreword

Our mission here at West Yorkshire Fire & Rescue Service (WYFRS) is to “Make West Yorkshire Safer”. To do this we have to understand the challenges and risks that local communities face.

We are continually assessing the risks within the city and the threat that they pose to life, property and the environment.

This plan aligns our local, district priorities with those set out in the WYFRS Integrated Risk Management Plan Your Fire and Rescue Service 2020-2023.

It demonstrates how we in Bradford district will work with our partners to make Bradford a safer place to live.

Fire prevention and risk reduction initiatives remain our key strategy for driving down the risk in Bradford. This compliments the wider district strategy that is determined by the Bradford Community Safety Partnership which also addresses other issues such as crime, domestic violence and anti-social behaviour. Working with partner agencies, we endeavour to identify those groups and people who are most vulnerable in Bradford and ensure they have the necessary support to keep them safe.

Ultimately, we are committed to reducing the number of incidents that occur in Bradford; we will continue to engage with the public in their homes, schools, faith establishments and places of work - I feel education is paramount to promote our key prevention messages, raise awareness and ultimately drive down incident numbers.

I am proud that Bradford’s firefighters are highly trained, professional and are committed to providing a first-class fire and rescue service to the people of Bradford. We have set out our plans to prioritise our service delivery in the community over the coming year and we would encourage you to look at these in detail. We aim to deliver our priorities through our four key pillars: Prevention, Protection, Response and Resilience.

Benjy Bush
Bradford District Commander

“ This plan sets out how we plan to make Bradford safer ”



About Bradford district

The Bradford district covers around 141 square miles and has a population of almost 500,000 people.

The district stretches across Airedale, Wharfedale and the Worth Valley as well as Bradford city and the towns of Bingley, Ilkley, Keighley, and Shipley.

Bradford is ethnically, culturally and geographically diverse. The district is an economically challenged area, containing a large range of social-economic groups ranging from the affluent to the very deprived.

These factors create a wide variety of risk profiles which we manage through various Prevention, Protection and Response arrangements. Much of the effectiveness of the district's community safety strategy lies in the links with our partners, including Bradford District Council, West Yorkshire Police, local housing associations and the voluntary sector.

Bradford District features over 4,000 listed buildings and has a fast growing and dynamic workforce, a high proportion of self-employment and new business start-ups. Unlike many other UK cities, our young population is growing – nearly a quarter are under 16 years of age. In addition, the district is home to the HQs of major companies including Morrisons, Yorkshire Building Society, Provident Financial, Hallmark Cards, Pace, Freeman Grattan Holdings and Yorkshire Water.

“Bradford is ethnically, culturally and geographically diverse”



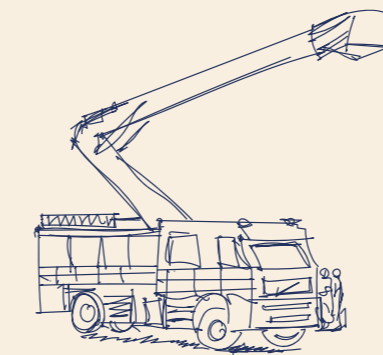
Risk and fire & rescue resource in Bradford district

We have several specialist units in Bradford.

Bradford District is covered by nine Fire Engines across eight Fire Stations. Six of these are wholetime and two are Retained (on-call). The district has almost 200 personnel working across the stations and prevention team.

As well as this, Bingley Fire Station has a specialist water rescue unit with crews there specially trained to deal with flooding and water rescues.

There is also a specialist wildfire team at Keighley Fire Station to deal with large scale moorland fires. Bradford Fire Station provides an aerial response to incidents across the Service if required, using their Aerial Ladder Platform.



Bradford Stations

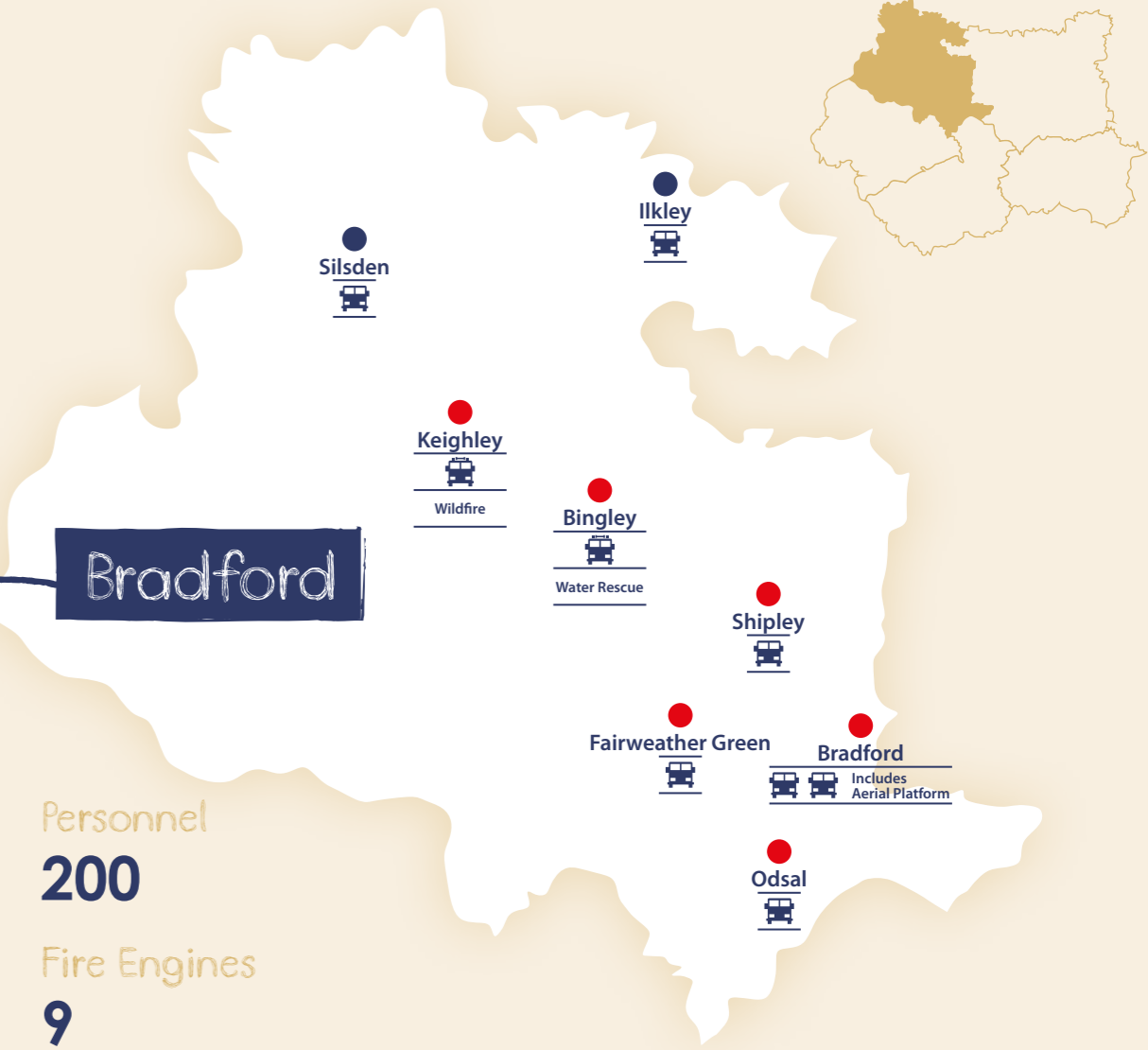
- **Wholetime**
24/7 availability from station
- **Retained (On-call)**
Respond from home or work during the day and night

Population
500,000

Size of area
141² miles

Personnel
200

Fire Engines
9



Why we are here

Our ambition



Making West Yorkshire Safer

To improve community safety and wellbeing and reduce the risk to life, property and the environment from fire and other emergencies



Our guiding principles

To achieve our ambition we will:

- Focus on risk and vulnerability
- Be part of our communities
- Work in partnership
- Be at our best and strive to improve
- Make a positive difference in everything we do
- Promote diversity and create an inclusive workplace

The services we deliver

Prevention

Raising awareness about the risks people face to prevent emergencies and reduce vulnerability

Protection

Promoting and enforcing the fire safety measures required by law to ensure buildings and occupants are protected should a fire occur

Response

Being ready for and responding to emergencies

Resilience

Being able to deal with major emergencies and disruption locally and nationally whilst continuing to deliver our critical services

Priorities 2020-2023

This plan sets out how we aim to use our resources to manage the risks we face in West Yorkshire and keep you safe from fire and other emergencies.



“Our priority is to keep you safe from fire and other emergencies”

How we will deliver these priorities



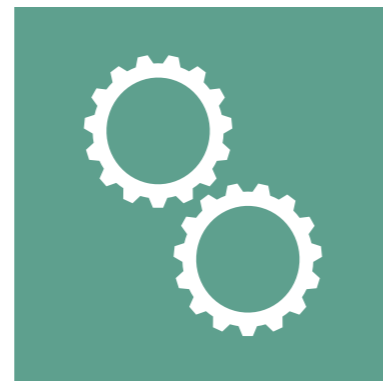
- We will continue to deliver the Safer Communities Prevention Strategy.
- Actively engage with the community and partners to identify risk, reduce vulnerability and support those most in need.
- We will work with Incommunities, Bradford District Care Trust and Children's Services along with other local partners to identify vulnerable individuals within the District to improve their safety and wellbeing.



- We will provide support to our staff, our partners and members of the community in response to the Covid pandemic.
- We will undertake and learn from training and exercises to ensure a safe response to the risks identified within Bradford.
- We will undertake a series of training days to further develop working relationships with the Local Authority and other partners.
- We will continue to build on our relationships with neighbouring Fire and Rescue Services through training and exercising.
- Undertake offsite training to improve our knowledge of local risk.



- We will continue to look for opportunities to be more efficient in how we operate.
- We will replace the Fire Station at Keighley with a more energy efficient new build.
- We will continue to integrate online training and meetings that can reduce the number of unnecessary journeys and our fuel costs.



- We will continue to support the delivery of lean working projects.
- We will look for opportunities to build and learn from how the service responded to Covid.
- We will continue to adapt and evolve the way we provide learning, education and engagement with the public and our partners.



- We will support the integration of new technologies and agile ways of working for district-based staff.
- We will use Social Media to promote our District Risk Reduction initiatives.
- We will support the implementation of the new Emergency Service Network.



- We will contribute to the HMI Service Action Plan by building on our understanding of JESIP and operational discretion.
- We will support and develop our Firefighters through Station Assurance Visits.
- We will support and develop our managers using modules from our Leadership Strategy.
- We will use the appraisal process to identify future leaders across the district.



- We will nurture talent and provide support for those wanting to develop in the service.
- We will continue to maintain a safe skilled workforce.
- We will support the implementation of a District Performance Dashboard which will support organisational improvement within Bradford District.



- We will work in partnership to prevent climate driven emergencies and develop ways of working to respond more effectively.
- We will work with our partners to mitigate the impact of flooding and wildfire incidents.
- We will use innovative technological solutions to reduce unnecessary journeys that impact on our carbon footprint.



- We will undertake inspections of all High Rise residential buildings as part of the Building Risk Review Programme.
- We will continue to implement and train against new procedures which improve our operational effectiveness.
- We will undertake high-rise exercises in properties within Bradford to improve our operational readiness and response.
- We will undertake exercises at our higher risk sites locations to improve operational response.



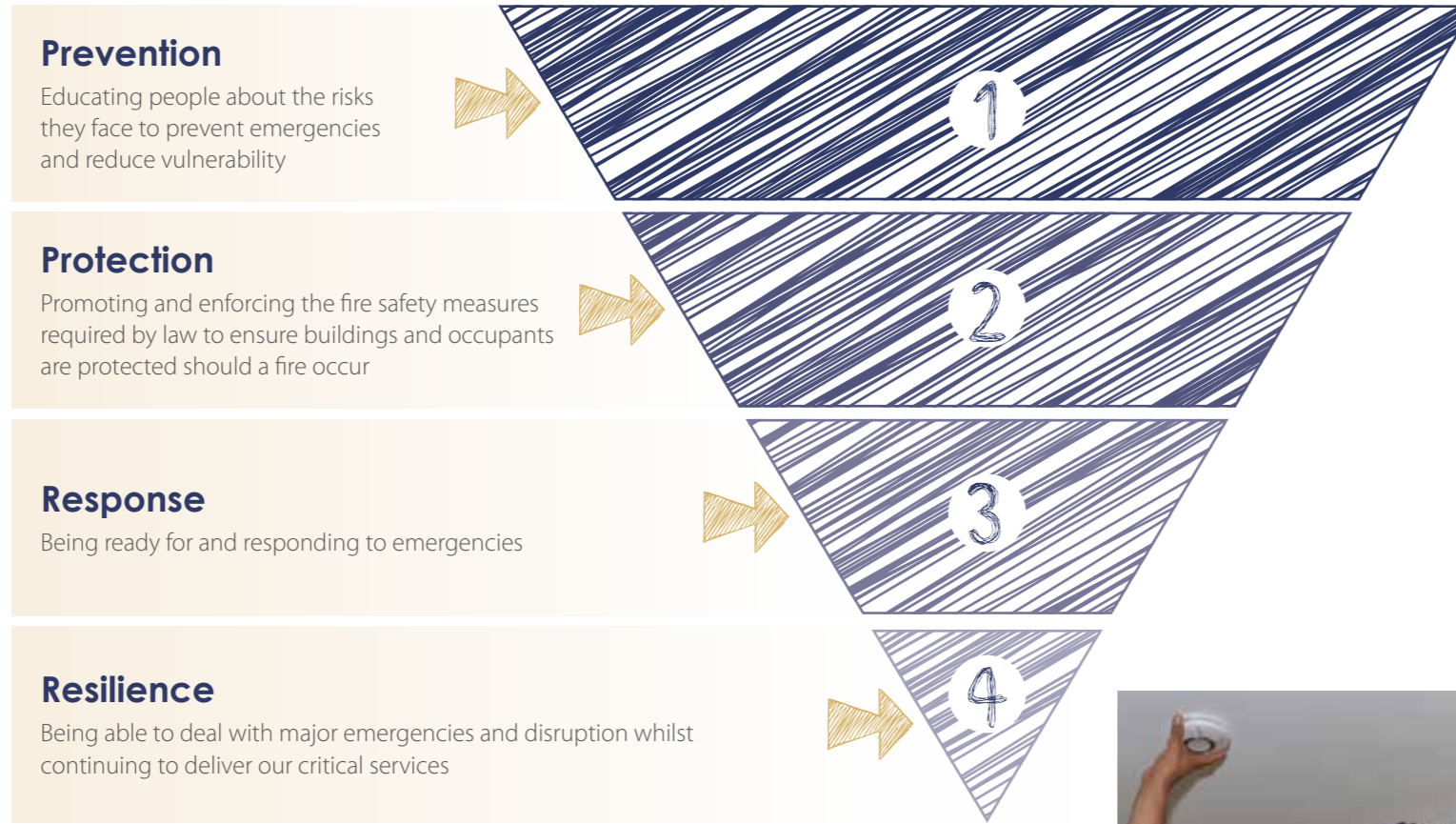
- We will deliver recruitment messages during all service delivery contact.
- We will continue to positively represent the service when working in our under represented communities.
- We will undertake a recruitment campaign for Retained Duty System Fire Stations at Ilkley and Silsden.
- We will promote our service values at all times and support positive action initiatives.
- We will work with partners to better understand community needs.

Risks in the Bradford District

Whilst attending emergencies across West Yorkshire is a statutory duty, our role is much broader than this. We aim to do everything we can to prevent an emergency response in the first place. We do this through prevention and protection activity. The residual risk that remains is managed through our response and resilience strategies.

The following sources have been used to identify the risk within Bradford District:

- The National Risk Register
- The WY Community Risk Register
- Local knowledge
- CPNI sites
- WYFRS Premises Risk Database (PRD)
- IRS; national and international data and experiences
- Environmental data and flood risk
- Information from local partners
- Foreseeable Risk Register



“To reduce risk our main focus is prevention”



Managing risks in Bradford

High Rise Buildings

How will we reduce the risk?

- Prevention**
- We will work with local housing associations and private resident associations to provide advice to those most at risk from a fire in High Rise Buildings.
 - We will work with the responsible person at buildings with unsafe cladding to give advice on additional safety requirements and ensure these remain in place until the cladding is removed and replaced.
 - We will update our prevention advice to reflect the learning from Grenfell.
 - Operational crews will target residents within high rise properties that haven't received a safe and well visit.
-
- Protection**
- We inspect all High Rise buildings as part of the WYFRS Building Risk Review Programme.
 - We will report and enforce non-compliance with legislation.
-
- Response**
- We will undertake a series of practical exercises to improve our response to high rise properties within Bradford.
 - We will undertake operational risk visits (ORVs) to ensure we understand unique risks in each individual building.
 - Fairweather Green Fire Station will undertake a series of training scenarios on a new building evacuation procedure.
 - We have a Pre-Determined Attendance for fires in High Rise Buildings that would be mobilised immediately on receipt of a 999 call into Fire Control.
-
- Resilience**
- We will develop and share tactical information plans with all stations likely to attend an emergency in Bradford.

“We inspect all High Rise buildings as part of the WYFRS Building Risk Review Programme”



Managing risks in Bradford

Complex Buildings

How will we reduce the risk?

- Prevention**
- We will provide advice to building occupiers on how mitigate the risk of fire.
 - We will work in partnership to reduce antisocial behaviour in location with significant risk.

- Protection**
- We will carry out Operation Risk Visits (ORV); we will report and enforce non-compliance with legislation when necessary.

- Response**
- Fire crews will carry out ORVs to ensure all risks are identified and understood.
 - Fire crews will take part in exercises to improve their response to these types of premises.
 - We will produce presentations on the main risks and hazards which are shared across the district.

- Resilience**
- Any response plans will be shared with other districts and neighbouring fire and rescue services.



Residential Care Homes

How will we reduce the risk?

- Prevention**
- We will deliver our safe and well service and provide interventions when necessary.
 - We will work alongside partners to provide education to care home staff around mitigating the risk of fire.

- Protection**
- Fire crews will carry out Operational Risk Visits.
 - We will encourage and if necessary, enforce compliance with legislation.

- Response**
- Fire crews will take part in exercises to improve their response at care homes.
 - Fire crews will have prior knowledge of hazards and risks through the ORV - they will also be aware of the evacuation plans on site.

- Resilience**
- Any response plans will be shared with other districts and neighbouring fire and rescue services.

“
Fire crews will take part in exercises to improve their response at care homes”

Managing risks in Bradford

COMAH Sites

How will we reduce the risk?

- Prevention**
- We will work with premise owners and the COMAH department in carrying out regular visits to the premises within Bradford.
 - Operational Crews will undertake a ‘tabletop’ exercise on a COMAH site within Bradford district to improve the operational knowledge of these premises.

- Protection**
- Our Fire Protection Department will carry out Fire Safety Audits at the COMAH sites across Bradford.

- Response**
- We are involved in ‘on site’ multi-agency practical training exercises that aim to test the business requirement to have emergency plans
 - We have a pre-determined number of resources we send to emergencies at the COMAH sites across Bradford.

- Resilience**
- We have 46 Fire Engines across West Yorkshire that will be strategically placed to provide 24/7 365 days a year cover.
 - Specialist resources are available from across West Yorkshire and through National Resilience arrangements.



“
Our Fire Protection Department will carry out Fire Safety Audits”

Deliberate fires and Anti-social behaviour

How will we reduce the risk?

- Prevention**
- We work with all primary schools across Bradford to educate children in fire prevention.
 - We will report accumulated or abandoned waste materials (fly tipping) to Bradford Council Waste Management Team.
 - We will continue to educate households through our ‘Safe and Well’ visit programme where we highlight the risk presented by a build-up of waste materials.
 - We will attend the local Council ward meetings and share intelligence with our partners.
 - We monitor performance activity monthly and will initiate local action plans involving Fire and partner resources where we identify a need.
 - We will engage with the community all year round to reduce tensions and anti-social behaviour around the bonfire period.
 - We will actively pursue prosecution against any person who attacks a firefighter.

- Protection**
- We will carry out Risk Based inspections of business premise in which we can highlight the impact of waste accumulation and provide arson prevention advice.

- Response**
- We have 46 Fire Engines across West Yorkshire that will be strategically placed to provide 24/7 365 days a year cover.

- Resilience**
- We will share our response plans with all partners likely to attend any emergency in Bradford District. We will also work with the local community ward officers by sharing local intelligence.

Managing risks in Bradford

Prevalence of false and malicious false alarms

How will we reduce the risk?

- Prevention**
- We educate School children in the dangers of reporting malicious false alarms.
 - We will work with the police in seeking prosecution for persistent malicious callers in appropriate circumstances.
 - We will educate our communities through our 'Safe and Well' visit programme on the importance of having maintained and working smoke detection. We will refer persons vulnerable to cooking related false alarms to our partner agencies for support.

- Protection**
- Our Service Delivery Staff and our Fire Protection Department will work with businesses to reduce the number of false alarm calls to business addresses.



“ We will educate communities through our 'Safe and Well' visit programme ”

Wildfire

How will we reduce the risk?

- Prevention**
- We will work with Bradford council in highlighting the Public Space Protection Order measures within Bradford District via community interaction days and social media outlets.
 - In collaboration with Bradford Council, we will distribute banners and posters identifying the dangers of fires on the moorland.
 - We will engage and educate the public at organised locations when we know the Wildfire severity indicators are high.
 - Bradford District will co-ordinate Wildfire training days with all crews and provide information on the location of water supplies, routes for access to moorland and partner support.

- Response**
- Keighley Fire Station house Bradford Districts Specialist Wildfire resources. These are strategically placed to respond to incidents.

- Resilience**
- We will share our response plans with local partners to aid in a co-ordinated response to any wildfire incident within Bradford District.
 - Three other Fire Stations across West Yorkshire are specialist Wildfire Stations that can be called in to support incidents on the moorlands of Bradford.
 - We can request support of other Fire Services across the country through local arrangements or through the National Coordination and Advisory Framework.
 - We will work with other districts and partners to encourage residents to #BeMoreAware.

Managing risks in Bradford

Flooding

How will we reduce the risk?

- Prevention**
- We will work with Bradford council and the Environment Agency in engaging and educating with residents at risk from flooding.
 - We will work with Bradford Council to distribute flood prevention control measures to the affected areas when a flood alert is received.
 - We will organise familiarisation days with local partners to aid in a co-ordinated response to any flooding incident within Bradford District.
 - In areas of persistent flooding, we will undertake training days with Council wardens in water safety and first aid.
 - We will share our response plans with local partners to aid a co-ordinated response to any flooding incident within Bradford District.
 - We will organise familiarisation visits for operational personnel to understand the co-ordinated flood response plan.

- Protection**
- Our Service Delivery Teams will highlight the measures available to business owners in reducing the risk of flooding at their premises.

- Response**
- All our District Firefighters are trained to work safely in and near flood water.
 - We have specialist Water Rescue assets at Bingley Fire Station that are trained to work in fast flowing water. They have a powered boat and will assist and rescue where required when flooding occurs.

- Resilience**
- A number of other Fire Stations across West Yorkshire have Specialist Water Rescue resources that will be brought in to support where required.
 - We can request support of other Fire Services across the country through local arrangements or through the National Coordination and Advisory Framework.



Managing risks in Bradford

Open Water Sites

How will we reduce the risk?

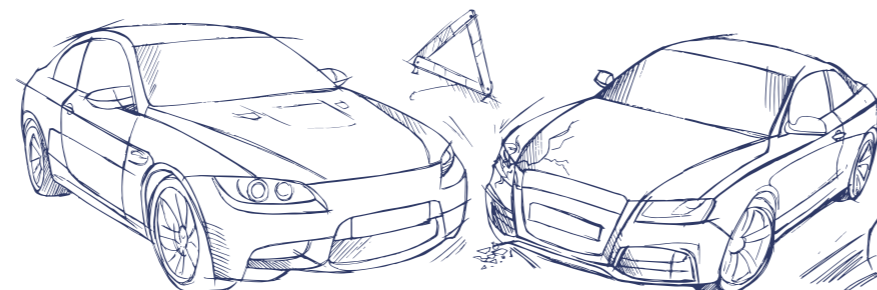
- Prevention**
- We will support partners including Yorkshire water and Bradford local authority with safety messages at specific sites.
 - We will deliver education and advice direct to the public at these sites.
 - We will support and promote national campaigns around water safety.
- Response**
- Fire crews will be prepared to respond through training and simulations.
 - Specialised resources and trained personnel within district to respond quickly to any water related incidents.
- Resilience**
- We provide water rescue training and equipment to all front-line fire appliances.



Road Traffic Collisions (RTCs)

How will we reduce the risk?

- Prevention**
- Our Risk Reduction Officers will work with Safer Bradford to carry out road safety initiatives across the district.
 - Our Service Delivery Teams will undertake school visits to educate children on the dangers associated with roads and how to behave safely in a vehicle.
 - Operational crews will work with partners in highlighting inappropriate parking and driving outside schools
 - WYFRS will continue to work with Safer Bradford partnership in aiming to make Bradford roads safer.
 - We will undertake a series of practical exercises to improve our effectiveness in response to road traffic collisions within Bradford.
- Response**
- Our Fire Control room will immediately send the nearest fire engines to a report of a Road Traffic Collision in Bradford.



Performance

- Target met/under the 3 year average target
- On target or within 10% of target
- Over target by 10%

District performance 2020 - 21

Performance indicator	3 year average target (2017/20)	Actual (2020/21)	Performance against 3 year average (2020/21)	Target (2021/22)
Arson	2193	1993	-9.1%	1993
Primary Arson	443	369	-16.6%	369
Secondary Arson	1776	1624	-8.6%	1624
Actual Rescues	199	194	-2.4%	194
Total Activity	6347	6298	-0.8%	6298
Dwelling Fires	316	294	-6.9%	294
Non-Domestic Building Fires	95	76	-20.0%	76
Prevalence of False Alarms	2502	2559	2.3%	2559
Fire Related Injuries	52	48	-7.7%	48
Road Traffic Collisions	134	105	-21.6%	105
Malicious False Alarms	123	126	2.7%	126

Performance targets 2021 - 22

Bradford, our people

We recognise the important role that our workforce plays in achieving the Bradford District priorities. We are investing in health and wellbeing, leadership and development and diversity and inclusion strategies to support staff to reach their full potential.

We have recently recruited additional firefighters to work at our on-call Stations in Silsden and Ilkley, this has been a positive step for our District. This allows us to bring in new talent and improve the availability of resources across Bradford District.



Teamwork

Bradford crews will undertake a variety of exercises to establish closer working with nearby stations.



Integrity

We will promote a culture of learning and trust.



Learning

We will undertake a series of interactive training sessions to ensure operational crews are prepared to respond to a variety of scenarios. We will implement learning from debriefs and assurance to drive improvement.



Responsibility

We will continue to make our staff as effective as possible through continue development of the CLM model.



Communication

Bradford District will undertake Bi-weekly meetings with junior officers to update fire crews on the changing priorities within the district.

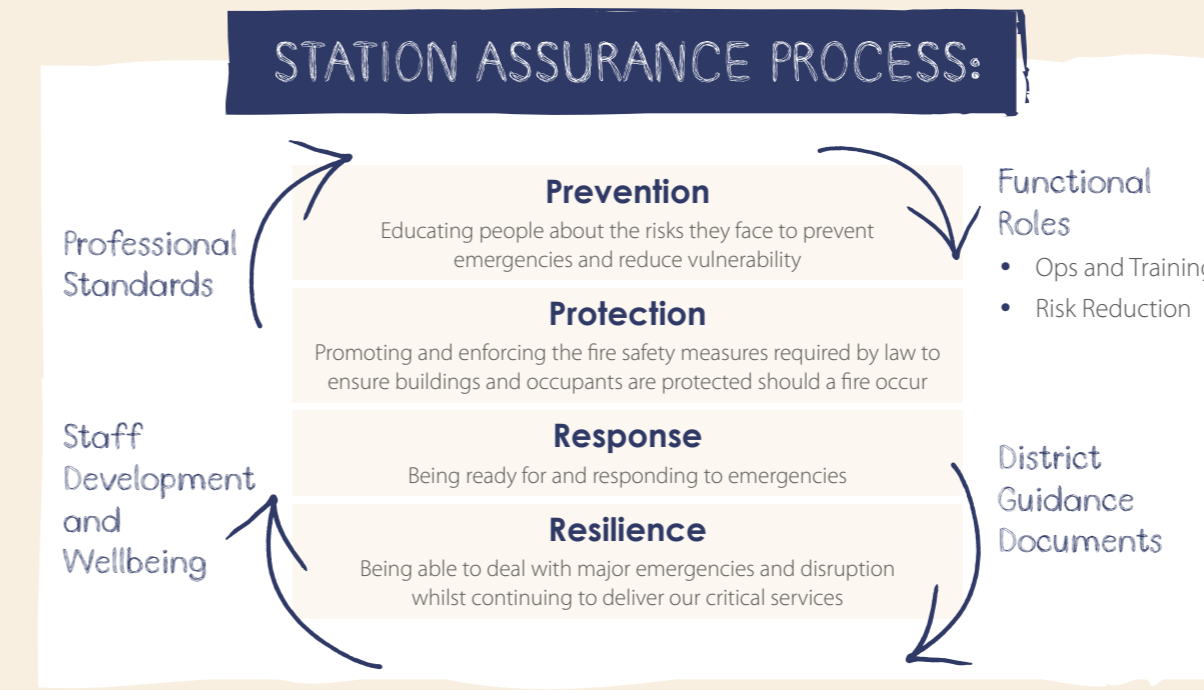


Monitoring progress

Bradford district performance across all areas will be monitored by the District Team. This is done in several ways through engaging with our crews during Station Assurance Visits (SAV) and our training and exercising programme.

Any Prevention activity is reviewed and assured through our Performance Management Indicators. On a monthly basis the Performance Management Indicators are monitored against a three-year rolling average. We implement action plans where we see unexpected trends.

Progress against the management of district risk will be reported to the West Yorkshire Fire and Rescue Authority in line with the Performance Management Framework.



Contact us



West Yorkshire
Fire & Rescue Service



01274 385410



bradford.prevention@westyorksfire.gov.uk



Bradford District Office
540 Leeds Road
Bradford
BD3 9SB



www.westyorksfire.gov.uk



@WYFRS



@WYFRSBfdTeam

