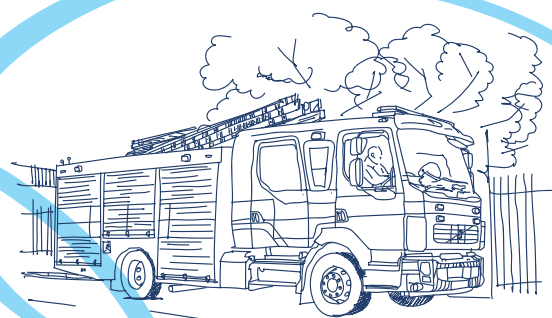




Calderdale District Plan 2021-22





Contents

Foreword	3
About Calderdale district	4
Why we are here	5
Priorities 2020-2023	6
How we will deliver these priorities	8
Risks in the Calderdale district	10
Managing risk in the Calderdale district	11
Performance	15
Calderdale, our people	16
Monitoring progress	17
Contact us	18

Foreword

West Yorkshire Fire & Rescue Service's (WYFRS) ambition is to "Make West Yorkshire Safer" and therefore we have to recognise and adapt to the changing risk and the associated impacts across the communities of Calderdale.

We are committed to a shared partnership vision 'Calderdale 2024' which firmly connects us to our key partner agencies. Our Calderdale District Plan closely aligns our local priorities with those set out in WYFRS Integrated Risk Management Plan Your Fire and Rescue Service 2020-2023.

We have identified local priorities and risks that we would like to focus on during 2021-2022. This is our opportunity to show how we are going to make Calderdale a safer place to live and work. We aim to deliver our District Plan using the key pillars of the WYFRS delivery strategy; response, prevention, protection and resilience.

District Team is committed to contribute to the wider Calderdale Community Safety Partnership (CSP). The scope of this partnership covers crime, anti-social behaviour, drug and alcohol misuse, reducing re-offending and reducing the risk to vulnerable groups. Prevention is better than cure and risk reduction and community engagement work it is at the heart of everything we do. We will focus resources to deliver fire safety and essential prevention advice through proactive education within the communities. During our 'Safe & Well' visits we will provide and fit essential smoke alarms and other essential safety equipment to the most vulnerable people in the community.

Our 'Safe & Well' home visits also promote wellbeing in the home while continuing to deliver the traditional fire safety advice. Our collaboration with local partner organisations is making a real difference to the quality of life for people living and working within our community. I am convinced that initiatives like this are contributing to the reducing number of dwelling fires and related injuries.

Our operational Fire-fighters are well prepared and equipped to deal with emergency incidents when the public need us most. Fire cover is provided across the District 24/7 and 365 days a year to ensure an effective and response when they are required.

The District Team will continue to support a number of local risk reduction campaigns during 2021-2022. These include our operational risk visits (ORV) programme, where we will be visiting some of our high-risk commercial businesses to gain valuable information should an incident occur at these premises. We will support the #BeMoorAware campaign, which delivers fire safety advice to protect our places of natural beauty and moorlands. We will support our Police and Local Council partners to deliver the Safer Roads Operation Hawmill, to reduce speeding and anti-social driving.

Damian Brown
Calderdale District Commander

“
Calderdale is a great place to live, work and visit and we will do all we can to keep you safe whilst you are here”



About Calderdale district

Calderdale district covers 140 square miles and has a population of around 200,100 people.

It contains large areas of open countryside and moorland, as well as several areas of deprivation. The district has some 4,000 listed buildings and the largest town, Halifax, still retains one of the most complete Victorian landscapes in Britain.

The district includes a water rescue team with firefighters who are specially trained to deal with flooding and rescuing people trapped in water. As well as this, there is also a wildlife unit with large scale moorland or grass fires.

Population
200,100

Size of area
140² miles

Personnel
92

Fire Engines
5



Calderdale Stations

- **Wholetime**
24/7 availability from station

- **Day Crewing**
Wholetime during the day, respond from home at night (on-call)

- **Retained (On-call)**
Respond from home or work during the day and night

Calderdale

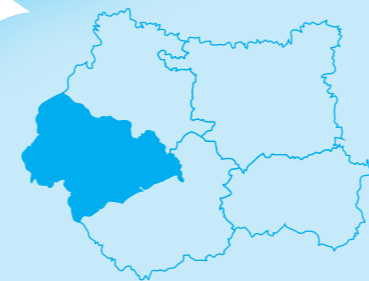
Todmorden
Water Rescue & Wildfire

Mytholmroyd

Illingworth

Halifax
Aerial Platform

Rastrick
Water Rescue



Why we are here

Our ambition



Making West Yorkshire Safer

To improve community safety and wellbeing and reduce the risk to life, property and the environment from fire and other emergencies



Our guiding principles

To achieve our ambition we will:

- Focus on risk and vulnerability
- Be part of our communities
- Work in partnership
- Be at our best and strive to improve
- Make a positive difference in everything we do
- Promote diversity and create an inclusive workplace

The services we deliver

Prevention

Raising awareness about the risks people face to prevent emergencies and reduce vulnerability

Protection

Promoting and enforcing the fire safety measures required by law to ensure buildings and occupants are protected should a fire occur

Response

Being ready for and responding to emergencies

Resilience

Being able to deal with major emergencies and disruption locally and nationally whilst continuing to deliver our critical services

Priorities 2020-2023

This plan sets out how we aim to use our resources to manage the risks we face in West Yorkshire and keep you safe from fire and other emergencies.



“Our priority is to keep you safe from fire and other emergencies”



“We will reduce the risks to the Calderdale community”



How we will deliver these priorities



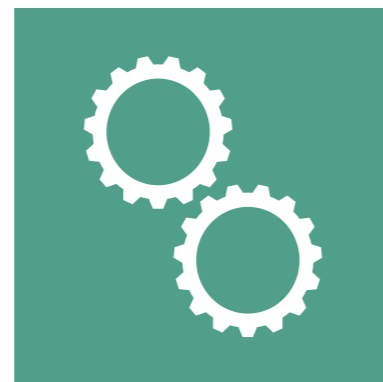
- We will continue to deliver the Safer Communities Prevention Strategy.
- Calderdale Prevention will reduce the number of partnership referrals to ensure the most vulnerable are referred into the service.
- We will work with Together Housing to identify vulnerable individuals within their properties to improve their safety and wellbeing.



- We will provide support to our staff, our partners and members of the community in response to the Covid pandemic.
- We will undertake training and exercises to ensure a safe response to the risks identified within Calderdale.
- We will undertake a series of training days to further develop working relationships with the Local Authority and flood wardens to improve how we respond to flooding across Calderdale.



- We will continue to look for opportunities to be more efficient in how we operate.
- Facilitate and plan the new ways of working at Todmorden fire station.



- We will continue to support the delivery of lean working projects.
- We will look for opportunities to build and learn from how the service responded to Covid.
- We will undertake a series of interactive training sessions via Teams to ensure operational crews are prepared to respond.



- We will support the integration of VOIP and agile ways of working for district-based staff.
- We will support the implementation of the Performance Dashboard which will support the organisation improvement with Calderdale District.



- We will contribute to the HMI Service Action Plan by building on our understanding of JESIP and operational discretion.
- Calderdale District will undertake a series of exercises with operational crews which will develop their knowledge of operational discretion.



- We will nurture talent and provide support for those willing to develop in the service.
- We will continue to maintain the competence of all service delivery staff.



- We will work in partnership to prevent climate driven emergencies and develop ways of working to respond more effectively.
- Calderdale District will implement a recycling program at all stations.



- We will undertake inspections of all Highrise residential buildings as part of the Building Risk Review Programme.
- Calderdale District will work with Together Housing on a vulnerability project to highlight tenants in high rise accommodation.
- All Calderdale watches will undertake a high-rise exercise at a high-rise property within Calderdale to improve operational response.



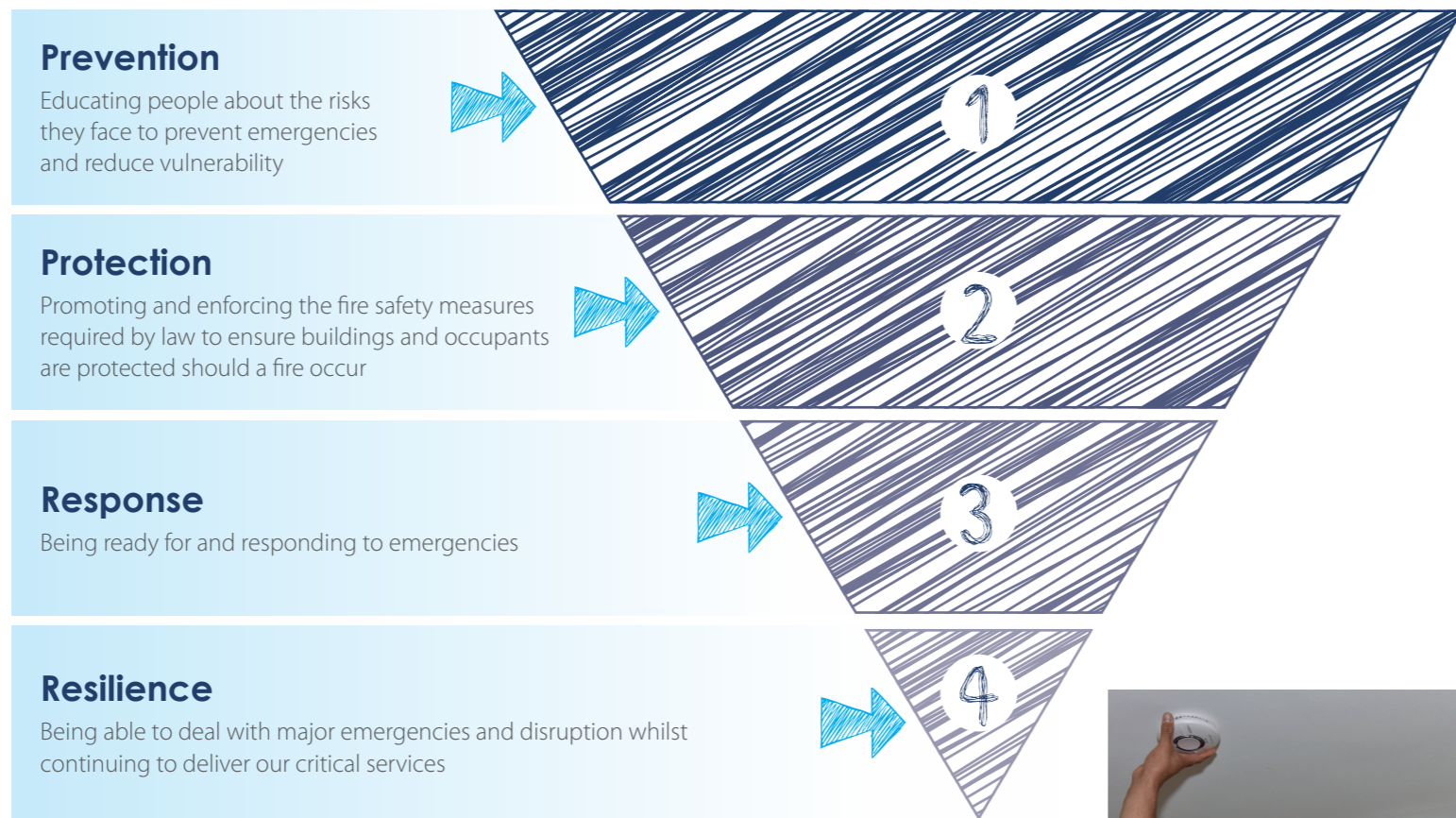
- We will deliver recruitment messages during all service delivery contact.
- We will continue to positively represent the service when working in our unrepresented communities.
- We will undertake a recruitment campaign for Mytholmroyd station to bolster the station availability.

Risks in the Calderdale district

Whilst attending emergencies across West Yorkshire is a statutory duty, our role is much broader than this. We aim to do everything we can to prevent an emergency response in the first place. We do this through prevention and protection activity. The residual risk that remains is managed through our response and resilience strategies.

The following sources have been used to identify the risk within Calderdale District:

- The National Risk Register
- The WY Community Risk Register
- Local knowledge
- CPNI sites
- WYFRS Premises Risk Database (PRD)
- IRS; national and international data and experiences
- Environmental data and flood risk
- Information from local partners
- Foreseeable Risk Register



“To reduce risk our main focus is prevention”



Managing risk in the Calderdale district

Arson

How will we reduce the risk?

- Prevention**
- We will work with Calderdale Council in reporting accumulated or abandoned waste materials.
 - Safe and Well visit will be utilised to highlight the risk presented by a build up of waste materials.
- Protection**
- Operational Crews when undertaking Operational Risk visits will highlight the impact of waste accumulation on businesses and provide arson prevention advice to local businesses.
- Response**
- Operational crews will undertake Environmental Visual Audits across the District to identify areas which may be vulnerable to arson threats. Any potential hazards or issues which may affect the operational response will be recorded and communicated with Calderdale crews.
- Resilience**
- We will share our response plans with all partners likely to attend any emergency in Calderdale District. We will also work with the local community wardens in sharing local intelligence.



Prevalence of false and malicious false alarms

How will we reduce the risk?

- Prevention**
- We will work with the police in seeking prosecution for persistent malicious callers in appropriate circumstances.
 - Calderdale Prevention team will work with Together Housing and other partners in working with vulnerable individuals on the consequences of making malicious call to emergency services.
- Protection**
- Operational Crews when undertaking Operational Risk visits will highlight the responsibilities of businesses owners in reducing causes of alarm at their premises.
- Response**
- Operational Crews will highlight the consequences of malicious false alarms during school visits.
- Resilience**
- We will work with Together Housing and Calderdale council to reduce the number of false alarms attended by WYFRS at their properties.

“We will visit schools to which will highlight the consequences of malicious false alarms”

Managing risk in the Calderdale district

High Rise Buildings

How will we reduce the risk?

- Prevention**
- We will work with Together Housing to provide advice to those most at risk from a fire in High Rise Buildings.
 - We will update our prevention advice to reflect the learning from Grenfell.
 - Operational crews will target residents within high rise properties that haven't received a safe and well visit.
- Protection**
- We inspect all Highrise buildings as part of the WYFRS Building Risk Review Programme.
 - We will report and enforce non-compliance with legislation.
- Response**
- We will undertake a series of practical/whiteboard exercises to ensure every high-rise property in Calderdale is exercised against.
 - Every Illingworth watch will undertake training scenarios on the new building evacuation procedure to embed during the first 12 months of implementation.
 - We will undertake and review operational response visits (ORVs) on all of our residential high rise properties.
- Resilience**
- We will share our response plans with all stations likely to attend an emergency in Calderdale District.

Wildfire

How will we reduce the risk?

- Prevention**
- We will work with Calderdale council in highlighting the PSPO measures within Calderdale District via community interaction days and social media outlets.
- Protection**
- Operational crews will undertake Environmental Visual audits to identify areas which may be vulnerable to wildfires and engage with the public to highlight the risk.
- Response**
- Calderdale District will co-ordinate Wildfire training days with all crews and provide information on the location of water supplies, routes for access to moorland and partner support.
- Resilience**
- We will share our response plans with local partners to aid in a co-ordinated response to any wildfire incident within Calderdale District.
 - We will undertake a multi-agency exercise on a wildfire risk within Calderdale District.

“
Calderdale District will co-ordinate
Wildfire training days with all crews”

Managing risk in the Calderdale district

Flooding

How will we reduce the risk?

- Prevention**
- We will work with Calderdale council in engaging with residents at risk of flooding within their areas.
- Protection**
- Operational Crews when undertaking Operational Risk visits will highlight the measures available to businesses owners in reducing the risk of flooding at their premises.
- Response**
- We will organise familiarisation days with local partners to aid in a co-ordinated response to any flooding incident within Calderdale District.
 - We will undertake training days with both flood and council wardens in water safety and first aid.
- Resilience**
- We will share our response plans with local partners to aid in a co-ordinated response to any flooding incident within Calderdale District.
 - We will organise familiarisation visits to operational personnel to understand the co-ordinated flood response within Calderdale.

COMAH Sites

How will we reduce the risk?

- Prevention**
- We will work with premise owners and the COMAH department in carrying out visits to the premises within Calderdale.
- Protection**
- All COMAH sites within Calderdale will be visited in 2021.
- Response**
- Operational Crews will undertake a table top exercise on each COMAH site within Calderdale District to improve the operational knowledge of these premises.
- Resilience**
- We will share our response plans with local partners to aid in a co-ordinated response to any flooding incident within Calderdale District.

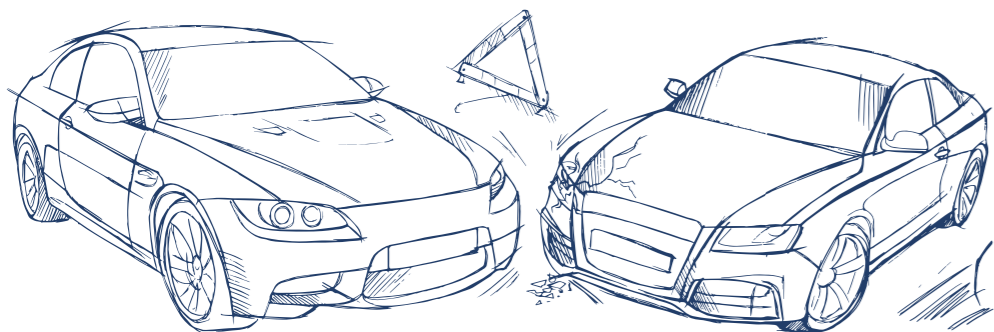


Managing risk in the Calderdale district

Road Traffic Collisions (RTCs)

How will we reduce the risk?

- Prevention**
 - Prevention staff and operational crews will undertake school visits in educating and engagement to promote sensible behaviour.
- Protection**
 - Operational crews will work with partners in highlighting inappropriate parking and driving outside schools.
- Response**
 - We will undertake a series of multi-pump practical exercises covering every watch to improve our response to road traffic collisions within Calderdale.
- Resilience**
 - WYFRS will continue to work with the Calderdale road safety partnership in aiming to make Calderdale roads safer.



Deliberate Fires within Calderdale District

How will we reduce the risk?

- Prevention**
 - We will work with Calderdale Council in targeting Park and Ovenden Wards where there are high incidences of deliberate. We will undertake clean up and action days within these communities.
- Protection**
 - Operational Crews when undertaking Operational Risk visits will highlight the impact of waste accumulation on businesses and provide arson prevention advice to local businesses with these wards.
- Response**
 - Operational crews will undertake Environmental Visual audits across these wards. Any potential hazards or issues which may affect the operational response will be recorded and communicated to all Calderdale crews.
- Resilience**
 - We will share our response plans with all partners likely to attend any emergency in Calderdale District. We will also work with the local community wardens in sharing local intelligence.

“ We will share our response plans with all partners likely to attend any emergency in Calderdale District ”

Performance

- Target met/under the 3 year average target
- On target or within 10% of target
- Over target by 10%

District performance 2020 - 21

Performance indicator	3 year average target (2017/20)	Actual (2020/21)	Performance against 3 year average (2020/21)	Target (2021/22)
Arson	382	378	-1.0%	378
Primary Arson	78	90	15.4%	90
Secondary Arson	311	288	-7.4%	288
Actual Rescues	97	93	-4.4%	93
Total Activity	2075	2262	-9.0%	2262
Dwelling Fires	105	97	-7.3%	97
Non-Domestic Building Fires	35	32	-9.4%	32
Prevalence of False Alarms	889	1056	18.8%	1056
Fire Related Injuries	23	13	-42.7%	13
Road Traffic Collisions	62	47	-23.8%	47
Malicious False Alarms	29	37	29.1%	37

Performance targets 2021 - 22

Calderdale, our people

We recognise the important role that our workforce plays in achieving the Calderdale District priorities. We are investing in health and wellbeing, leadership and development and diversity and inclusion strategies to support staff to reach their full potential.

We have recruited firefighters to work at Mytholmroyd Fire Station This has been a positive step for our District, enabling us to bring in new talent and improving the availability of resources through the Calder Valley.



Teamwork

Calderdale crews will undertake a variety of 2 pump exercises to establish closer working with nearby stations.



Integrity

Calderdale district will support and develop individuals to be the best they can be in meetings throughout the year.



Learning

We will undertake a series of interactive training sessions via Teams to ensure operational crews are prepared to respond to a variety of scenarios.



Responsibility

We will ensure all crews attend mandatory training courses in a variety of subjects to ensure competency.



Communication

Calderdale District will undertake bi-weekly meetings with junior officers to update watches on the changing priorities within the District.

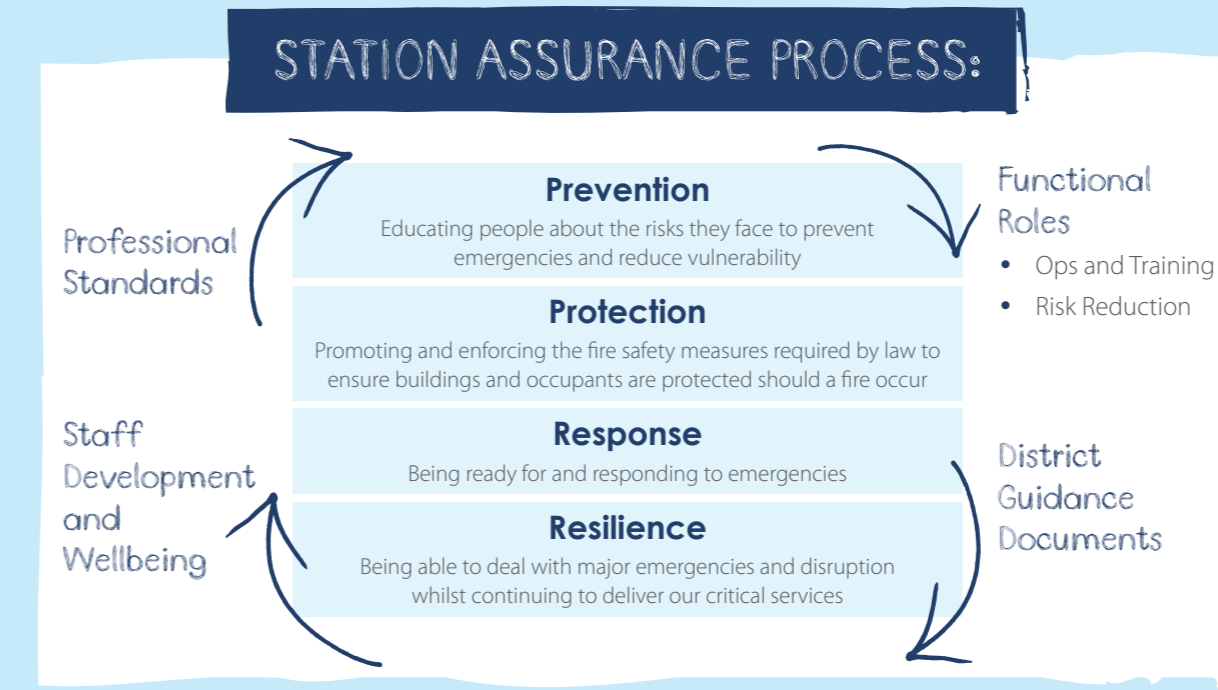


Monitoring progress

Calderdale District performance across all areas will be monitored through Service Assurance Visit (SAV) process.

Progress against the management of district risk will be reported to the West Yorkshire Fire and Rescue Authority to the West Yorkshire Fire and Rescue Authority in line with the Performance Management Framework.

Additional monitoring and review will be undertaken the Area Manager Service Delivery on a monthly basis.



Contact us



01422 386858



contact.calderdale@westyorksfire.gov.uk



Halifax Fire Station
Skircoat Moor Road
King Cross
Halifax
HX1 3JF



www.westyorksfire.gov.uk



@WYFRS





West Yorkshire
Fire & Rescue Service

